

APPLE
GROW+H
PARTNERS
Healthy Growth.

A blue rectangular graphic with white and red text. At the top right, 'COVID-19' is written in large white letters, with '19' in red. Below it, 'RESPONSE TEAM' is written in white. Underneath that is the email address 'COVID19@APPLEGROWTH.COM'. On the left side, there are two red, spiky virus-like icons. At the bottom left, the Apple Growth+H Partners logo is repeated in smaller white text. At the bottom right, a tagline reads 'YOUR PARTNERS FOR NAVIGATING COVID-19 UPDATES FOR BUSINESS OWNERS' in small white capital letters.

COVID-19
RESPONSE TEAM
COVID19@APPLEGROWTH.COM
APPLE
GROW+H
PARTNERS
Healthy Growth.
YOUR PARTNERS FOR NAVIGATING
COVID-19 UPDATES FOR BUSINESS OWNERS

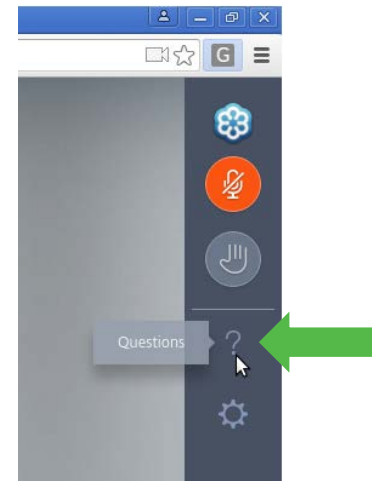
CARES Act *Question & Answer Roundtable*

PRESENTED BY MATT SILLA, BRANDON FREDERICKS, AND ROBERT JACKSON

applegrowth.com/COVID19

Welcome

- + All attendees are placed on listen-only mode
- + Submit a confidential question at any time
- + Questions will be reviewed by our team and followed up after the webinar
- + Contact information will be provided
- + Today's webinar recording will be sent via email within 2 hours



Disclaimer

- + Apple Growth Partners' published material provides general coverage of its subject area and is presented to the reader for educational purposes based on the most current regulatory information available at the time it was written. All communications, whether written or oral should be reaffirmed prior to the submission of any application. All information in this published material and on our website is provided in good faith; however, we make no representation or warranty of any kind, express or implied, regarding the accuracy, adequacy, validity, reliability, availability, compliance with any law (federal, state or local) or professional standard or completeness of any information. We assume no responsibility to any recipient of this material to correct or update its contents for any reason, including changes in any law or professional standard. It is not intended to be audit, tax, accounting, advisory, consulting or investment advice. The information in this article is also not a substitute for legal advice and may not be suitable in a particular situation. Consult your attorney for legal advice.
- + Our articles, other published materials and website occasionally contain links to other web pages. Links to organizations and government agencies are provided as a convenience to our readers. The firm does not endorse and is not responsible for any third-party content that may be accessed from its website and does not recommend or endorse the use of any third-party's services. The links are to be accessed at the user's own risk, and the authors of this website make no representations or warranties about the content of these links.

COVID-19 Response Team

APPLE
GROW+H
PARTNERS
Healthy Growth.



Sue Peirce, CPA, MTax
Principal, COVID-19 Leader



Kathy Davis
Senior Manager



Brandon Fredericks, CPA
Senior Manager



Dave Gaino, CPA
Principal



Robert Jackson, CPA
Senior Manager



Toby Kaye, CPA, MTax
Manager



Bethany Lawrence
Senior Associate



Taylor Lorenz, MAcc
Supervisor



A'Shira Nelson, CPA
Manager



Matt Silla, ASA, CFA
Senior Manager

Q&A Roundtable

APPLE
GROW+H
PARTNERS
Healthy Growth.



Q&A Roundtable



My bank hasn't processed/is having issue processing my loan application. What should I do?



Q&A Roundtable



I am a sole proprietor applying for the PPP. What amount am I supposed to use for my payroll loan amount?



Q&A Roundtable



I heard that if I apply for a PPP loan, that I will not be able to take the Employee Retention Credit or defer my social security taxes. Is this true?



Q&A Roundtable



What if I have applied for the PPP at two banks?



Q&A Roundtable



I tried filing for the EIDL, but my application would not save. My banker said it was because the EIDL funding ran out. Is this true?



Q&A Roundtable



How do credits under the FFCRA affect the PPP loans or the Employee Retention Credit?



Q&A Roundtable



My business would be defined as ‘non-essential.’ With the Ohio mandated shutdown continuing until at least April 30th, how should I proceed with the PPP funds?



Q&A Roundtable



I wanted to make sure I received the PPP funds, so I applied immediately. It now appears, I will not need my workforce until mid-May. Can I stop the application process and try again later?



Q&A Roundtable



Is the \$10,000 EIDL grant forgivable like the PPP?



Q&A Roundtable



The PPP has allocated \$349 billion. What is the likelihood the program runs out of funding? What are you hearing about additional funding?



Q&A Roundtable



I incurred 'sick pay' and 'family leave pay' to some of my employees. Am I entitled to any payroll tax credits?



Q&A Roundtable



I have yet to apply for our EIDL and/or PPP loan, is it too late?



APPLE
GROW+H
PARTNERS
Healthy Growth.



Thank You

****Newly Added****

Part 5 - Navigating for Non-Profits | Thursday, April 9 | 1 - 1:45 PM

Register at applegrowth.com/COVID19